

# Exhibit C-49 S-5: TIA excerpt



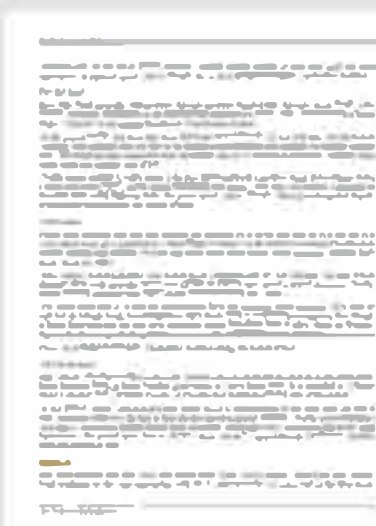
4



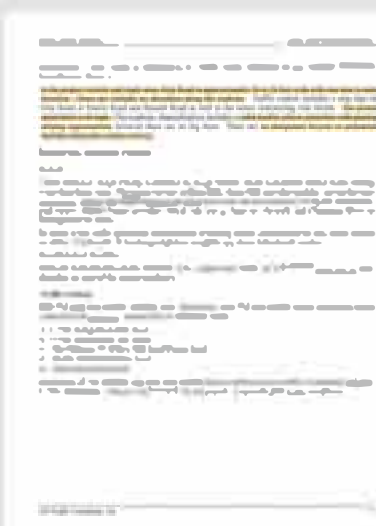
5



6



7



8

In the project vicinity and study area, F&S Grade Road is approximately 22 feet wide with one lane in each direction with a two (2) foot to four (4) foot paved or gravel shoulders. Traffic control includes a stop sign on F&S Grade Road at Prairie Road and Borseth Street and minor intersecting side streets along the corridor. The posted speed limit is 40 mph. There are no designated bicycle or pedestrian facilities along this section of road.

### **Grip Road**

Grip Road generally runs east-west from Prairie Road on the west to Bassett Road on the east. Bassett Road continues to the east intersecting with SR 9 approximately 1.5 miles east of the Grip Road

DN Traffic Consultants, Inc.

5

## **Traffic Impact Analysis**

## **Grip Road Mine Development**

intersections. Grip Road is classified as a “Rural Minor Collector” in the WSDOT Functional Classification System.

In the project vicinity and study area, Grip Road is approximately 20 to 22 feet wide with one lane in each direction. There are virtually no shoulders along the roadway. Traffic control includes a stop sign on Grip Road at Prairie Road and Bassett Road as well as the minor intersecting side streets. The posted speed limit is 40 mph. The roadway channelization includes a solid double yellow centerline with passing striping opportunities, however there are no fog lines. There are no designated bicycle or pedestrian facilities along this section of road.

### **Transit/Non-Motorized Facilities**

#### **Transit**

Transit service in Skagit County is provided by Skagit Transit. There is no transit service in the vicinity of the Grip Road Mine. The closest service is Route 80X. Route 80X provides weekday service between Bellingham Station and Skagit Station in Mount Vernon with one-hour headways during the AM and PM peak hours. Skagit Transit provides park & ride lots at Alger to the north and Chuckanut Drive in Burlington to the south.